

Tutorial Photoshop -cutting out-

by Pierre Honoré

contact: info@pierrehonore.com web : www.pierrehonore.com

Macrophotography

1- Shooting



Subject:

- 1-Choose your subject
- 2-Aim and focus as close as you can (press the shutter button halfway)
- 3-Frame
- 4-and then shoot

infortunately the background is too messy.

Background (2 pictures minimum)

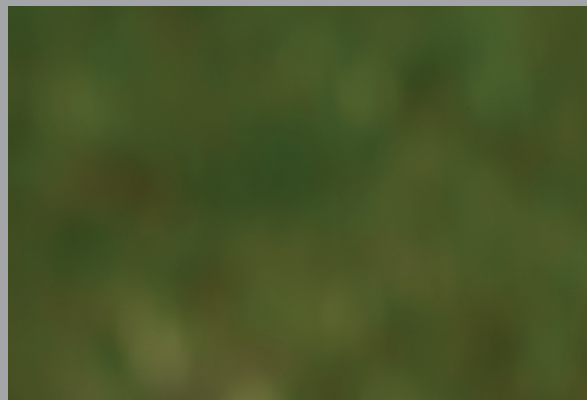
1-Aim at the flower and focus but don't shoot yet and keep your finger on the shutter button pressed halfway (focus process).

2-And then shift from the initial target to another area that matches with the background of your first picture.

tip: Take the pictures close to your subject and don't change your camera's setting. You get good results with grace.

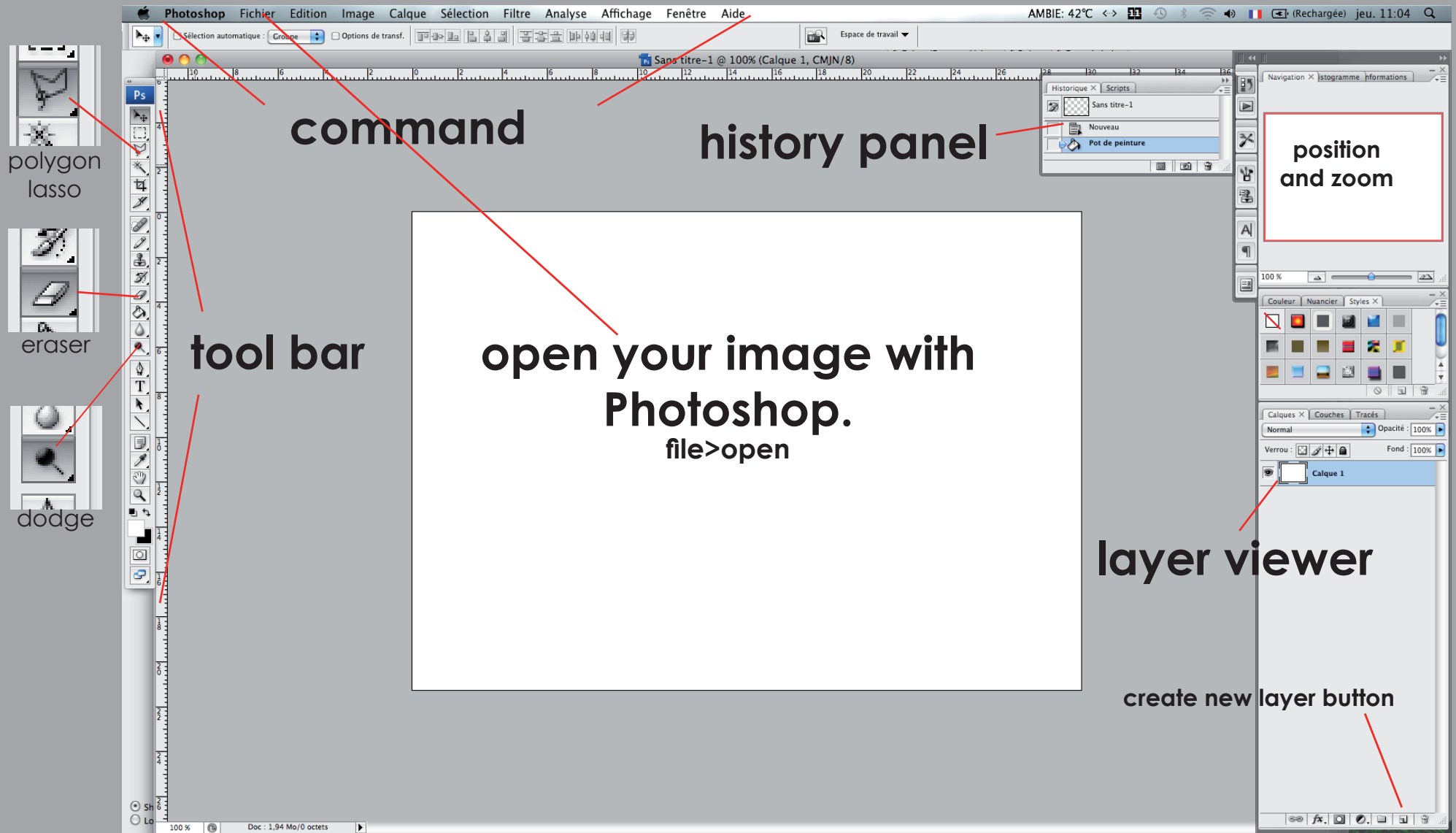


picture background 1

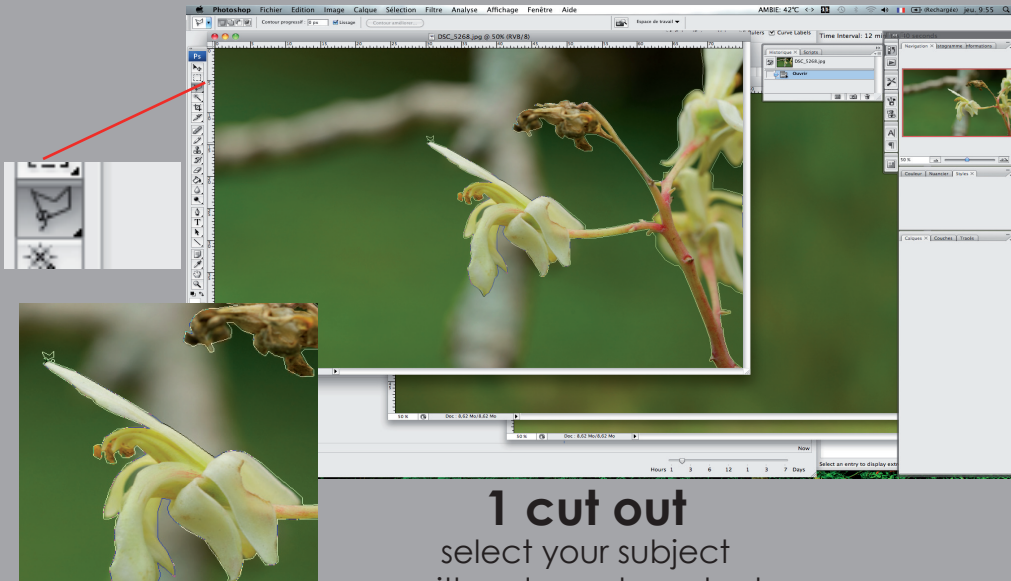


picture background 2

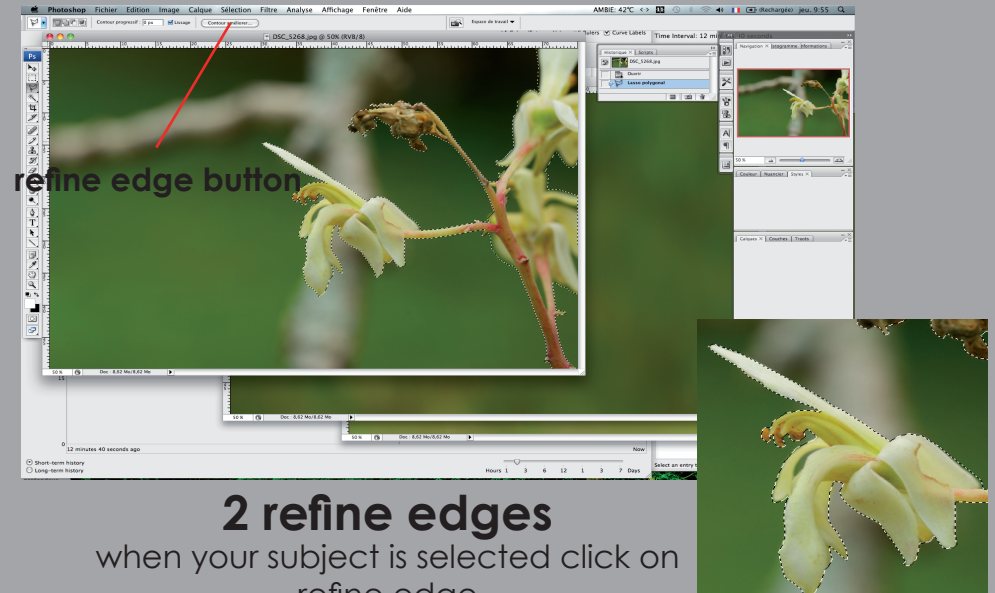
2 - Post-production with Photoshop



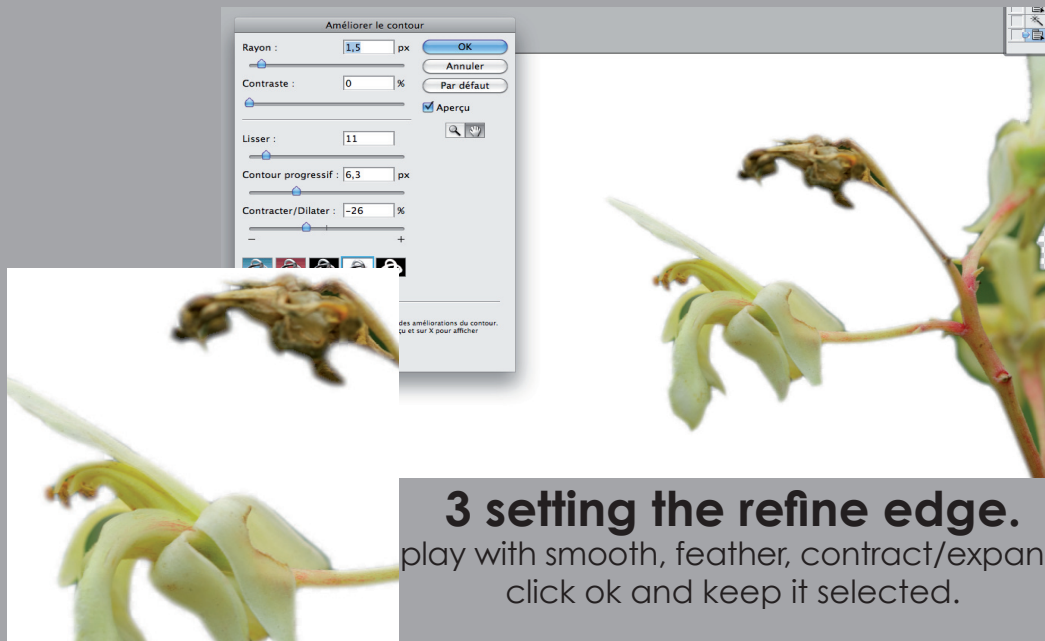
3 - Cutting out with the lasso



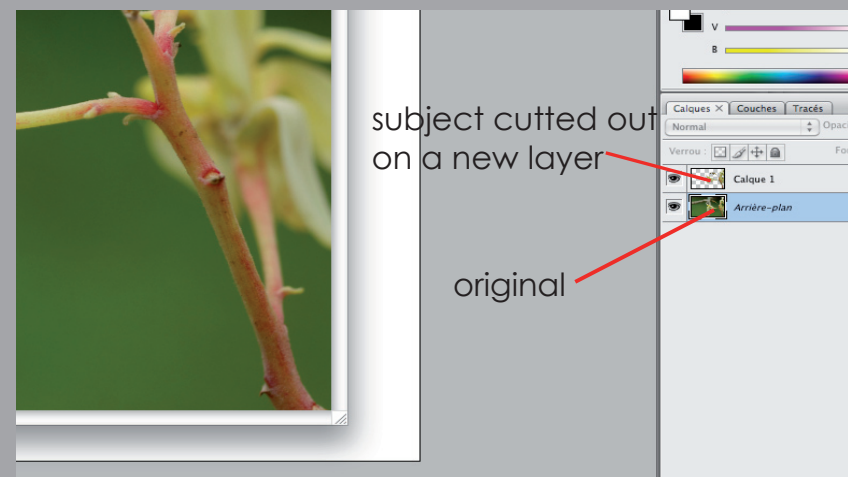
1 cut out
select your subject
with polygon lasso tool



2 refine edges
when your subject is selected click on
refine edge

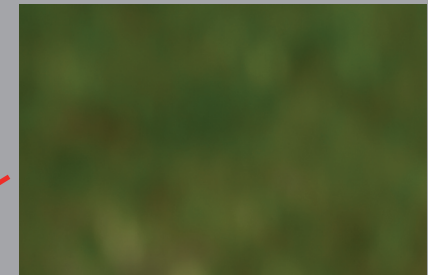


3 setting the refine edge.
play with smooth, feather, contract/expand
click ok and keep it selected.



4 copy-paste the subject
Create a new layer 1. your subject is still selected.
copy-paste the flower in to the new layer.
Tip: copy-paste= control+c - control+v. mac= ⌘+c ⌘+v

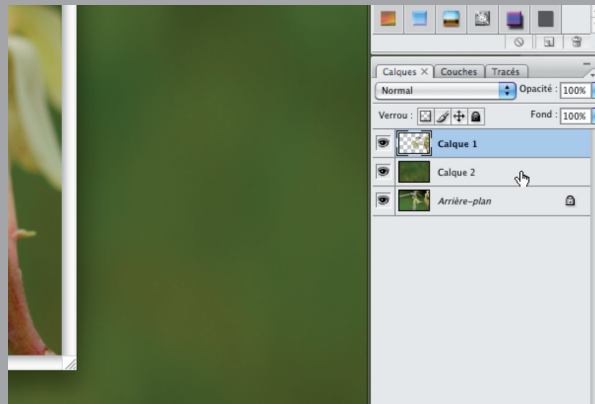
4 - Choose and copy-paste the background



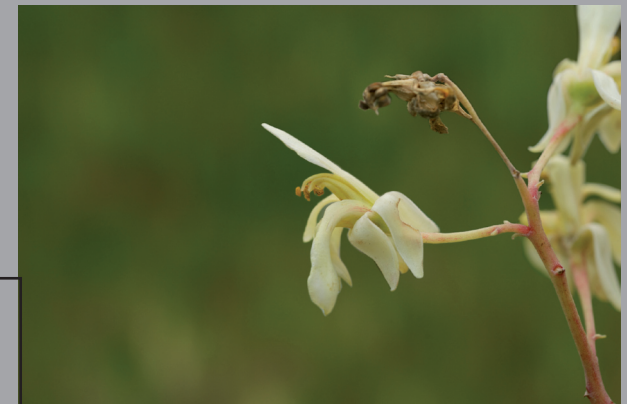
Create a second layer (layer 2)



too bright

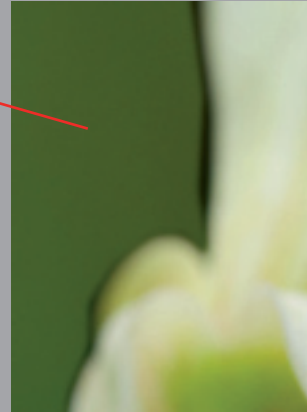


tip: stack layers in the right order: foreground is «up» and background is «down». **never erase the original layer**

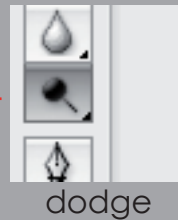


good balance of subject/background

5-Correction of edge defects



for black or large dark edge use the eraser tool with smooth edge. adapt the size of the tool to the area you need to correct



dodging = light density. Lighten dark areas or dark colors. up here we have some dark green remaining from the original background.

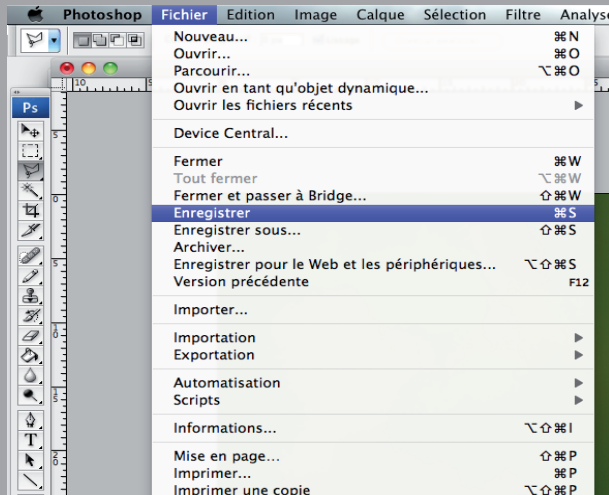
remember to adapt the dodge brush to the size to the area you need to correct. also remember that you have several tools on the same button. here you have : dodge; burn; sponge. burn=draker. sponge=blur.

6 - How to save?

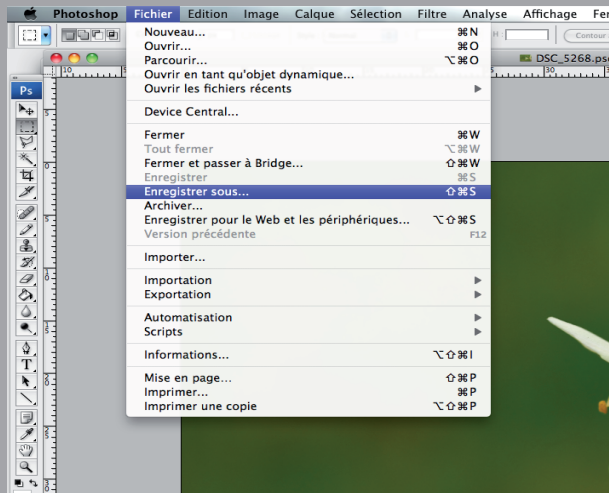
the goal here is to keep a copy of your edited photo in JPEG and PSD format.

the .psd format keeps all the layers and data.
keep it safe.

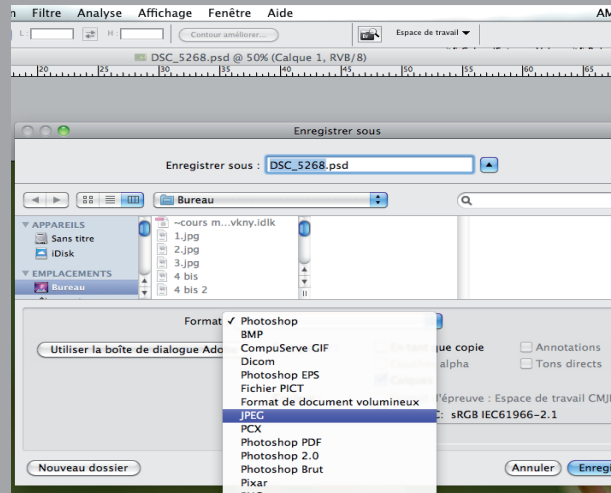
tip: better to create a new folder and keep all the files in it:
the originals : flower and background
the .psd the .jpg and all the copies you make.



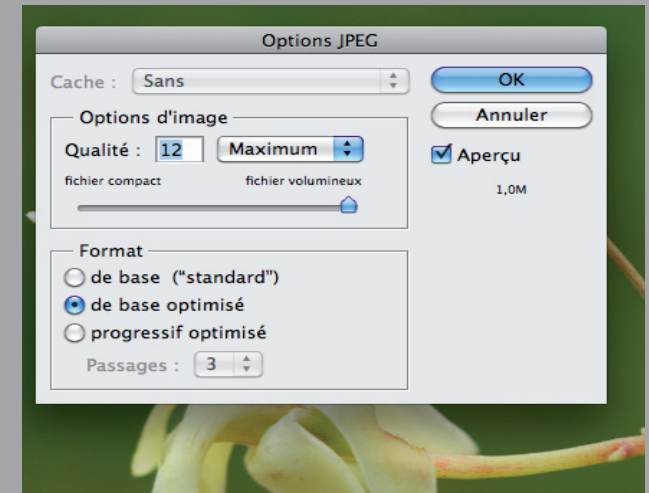
file>save.



file > save as...



save as window, choose a place and select JPEG format



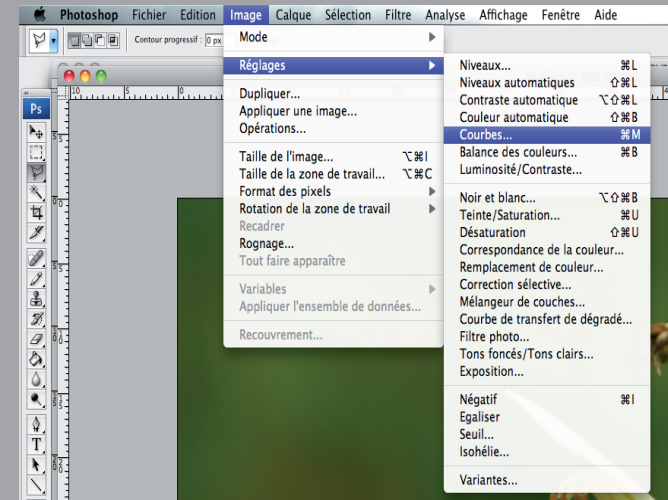
JPEG options window, quality max click ok.

7 - Adjustements

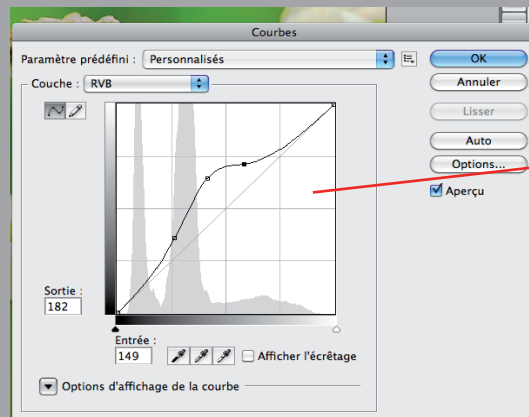
1 - open your JPEG.



2 - Image>adjustements>curve



3 - play with the curve until you are happy with it.



4 - your image is ready to save before closing !!!



